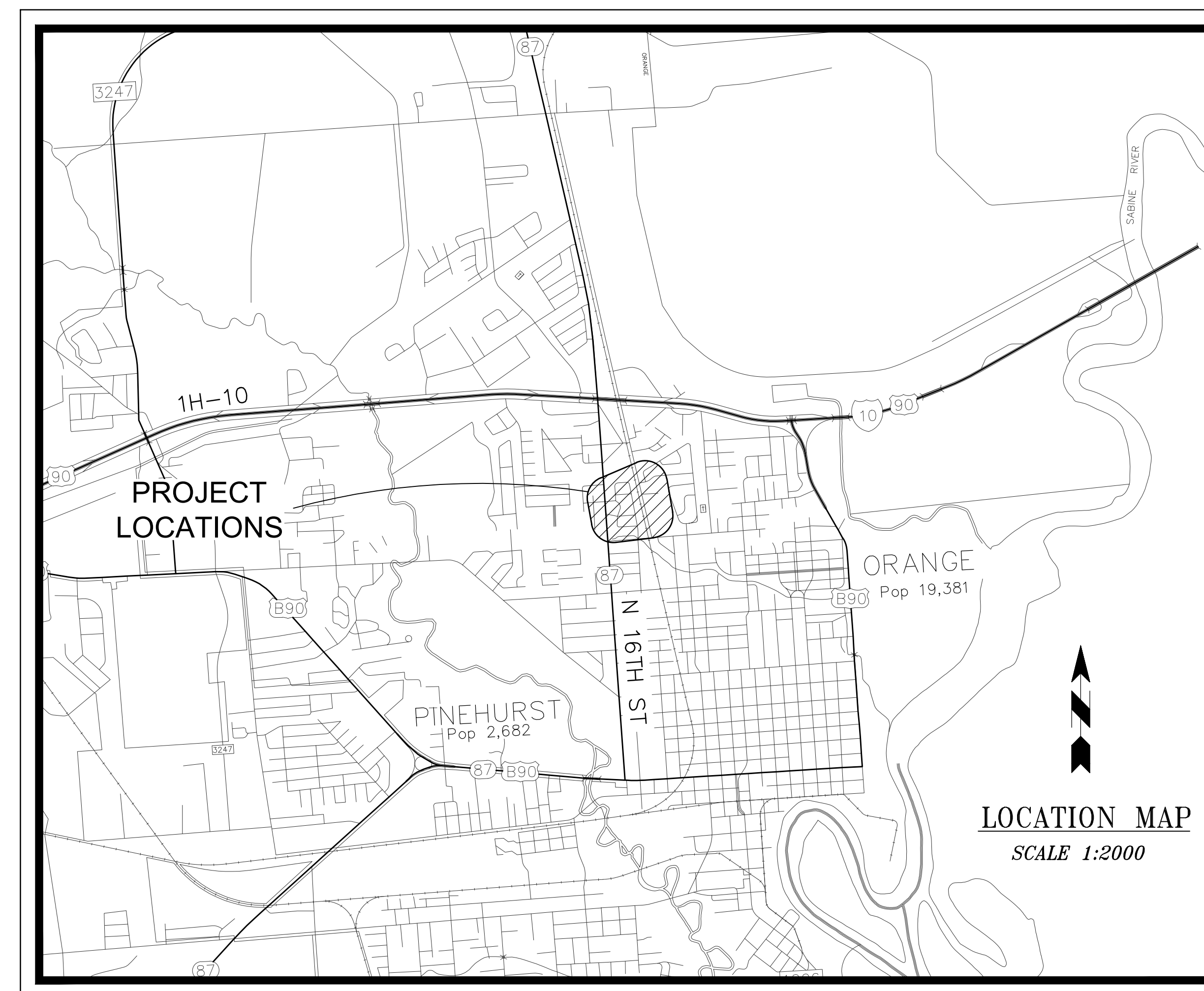


ORANGE
T E X A S

SUNSET ADDITION WATER & SEWER IMPROVEMENTS



FEBRUARY 7, 2025

Fittz & Shipman
INC.

Consulting Engineers and Land Surveyors

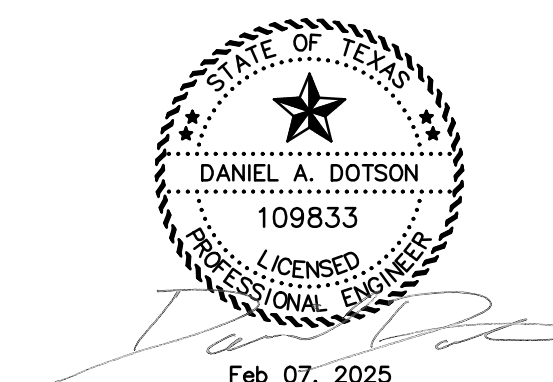
1405 CORNERSTONE COURT BEAUMONT, TEXAS

(409)832-7238 FAX (409)832-7303

T.B.P.E. FIRM NO. F-1160 T.X.L.S. FIRM NO. 100186

SHEET INDEX:

C0.00	COVER SHEET
C1.10	GENERAL NOTES
C2.00	KEY PLAN
C2.01	PLAN SECTION
C2.02	PLAN SECTION
C2.03	PLAN SECTION
C2.04	PLAN SECTION
C2.05	PLAN SECTION
C2.06	PLAN SECTION
C3.10	GENERAL DETAILS
C3.11	GENERAL DETAILS
C3.12	GENERAL DETAILS

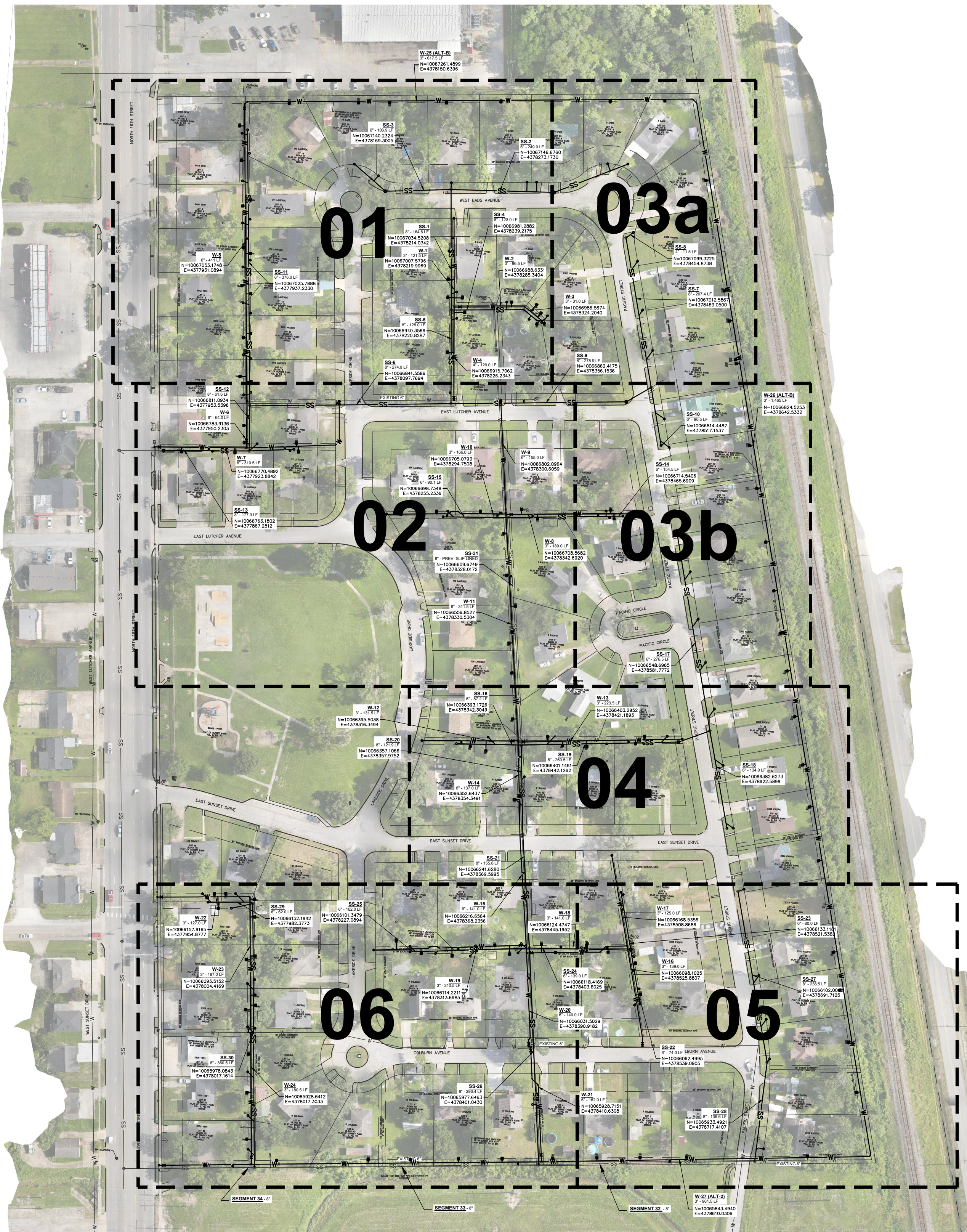


OWNERSHIP OF DOCUMENTS

THIS DOCUMENT, AND THE IDEAS AND DESIGNS INCORPORATED HEREIN, AS AN INSTRUMENT OF PROFESSIONAL SERVICE, IS THE PROPERTY OF FITTZ & SHIPMAN, INC., AND IS NOT TO BE USED, IN WHOLE OR IN PART, FOR ANY OTHER PROJECT WITHOUT THE WRITTEN AUTHORIZATION OF FITTZ & SHIPMAN, INC.

DWG NAME: 22108_CE_SITE.DWG
COPYRIGHT 2025 DRAWN BY: TCL SHEET **C0.00**

C:\PROJECTS\22108 - Or CDBG 4466 Imelda Grant App\Civil\Drawings_Current\22108_CE_SITE.dwg Feb 07, 2025 11:05am



PIPE QUANTITIES			
SEGMENT #	SANITARY	SEGMENT #	WATER
SS-1	8"-164.6 LF	W-1	3"-121.5 LF
SS-2	6"-249.0 LF	W-2	3"-96.5 LF
SS-3	6"-106.9 LF	W-3	3"-31.0 LF
SS-4	8"-123.0 LF	W-4	4"-129.0 LF
SS-5	8"-128.0 LF	W-5	6"-411.0 LF
SS-6	8"-274.9 LF	W-6	6"-64.0 LF
SS-7	8"-207.4 LF	W-7	6"-310.5 LF
SS-8	4"-11.5 LF	W-8	3"-189.0 LF
SS-9	8"-278.9 LF	W-9	6"-155.0 LF
SS-10	6"-80.5 LF	W-10	3"-166.0 LF
SS-11	6"-376.0 LF	W-11	6"-311.5 LF
SS-12	8"-61.6 LF	W-12	3"-131.5 LF
SS-13	8"-177.0 LF	W-13	3"-223.5 LF
SS-14	6"-154.5 LF	W-14	6"-137.0 LF
SS-15	6"-90.0 LF	W-15	6"-141.0 LF
SS-16	6"-87.2 LF	W-16	3"-139.0 LF
SS-17	6"-276.5 LF	W-17	3"-125.0 LF
SS-18	6"-134.0 LF	W-18	3"-141.0 LF
SS-19	8"-260.5 LF	W-19	3"-210.5 LF
SS-20	8"-121.9 LF	W-20	6"-140.0 LF
SS-21	8"-155.8 LF	W-21	6"-162.0 LF
SS-22	6"-74.0 LF	W-22	3"-127.0 LF
SS-23	6"-80.0 LF	W-23	3"-187.0 LF
SS-24	6"-139.0 LF	W-24	3"-180.5 LF
SS-25	6"-162.0 LF	W-25	3"-617.5 LF
SS-26	8"-296.4 LF	W-26	3"-1,465.0 LF
SS-27	8"-236.5 LF	W-27	3"-961.0 LF
SS-28	8"-136.6 LF		
SS-29	6"-62.0 LF		
SS-30	8"-360.5 LF		
TOTAL	5,066.7 LF (8"-2,982.6 LF) (6"-2,071.6 LF) (4"-11.5 LF)	TOTAL	4,030.0 LF (6"-1,832.0 LF) (4"-129.0 LF) (3"-2,069.0 LF)

ALTERNATE B

LEGEND

SANITARY SEWER CLEANOUT

E-SERIES ULTRASONIC METER
(ALT A AND/OR ALT B)

FLUSH-OUT

FLOW ARROW (SANITARY)

SCALE: 1"=100'

CALL BEFORE
YOU DIG!!
TEXAS ONE
CALL SYSTEM
1-800-344-8377

OWNERSHIP OF DOCUMENTS

THIS DOCUMENT, AND THE IDEAS AND DESIGNS INCORPORATED HEREIN,
AS AN INSTRUMENT OF PROFESSIONAL SERVICE, IS THE PROPERTY OF
FITZ & SHIPMAN, INC., AND IS NOT TO BE USED, IN WHOLE OR IN
PART, FOR ANY OTHER PROJECT WITHOUT THE WRITTEN AUTHORIZATION
OF FITZ & SHIPMAN, INC.

Copyright 2025 FITZ & SHIPMAN, INC.

FS PROJECT #
22108.0000

DATE: Feb 07, 2025

SCALE: 1" = 100'

DRAWN BY: TCL

CHECK BY: DAD

FS DRAWING NAME:
22108_CE_SITE

PLAN
SECTION
SHEETS
KEY

C2.00

© COPYRIGHT 2025 FITZ & SHIPMAN, INC.

ISSUED FOR

DATE

NO.

INC.

Consulting Engineers and Land Surveyors

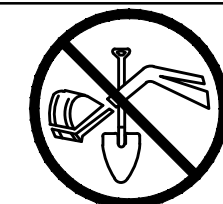
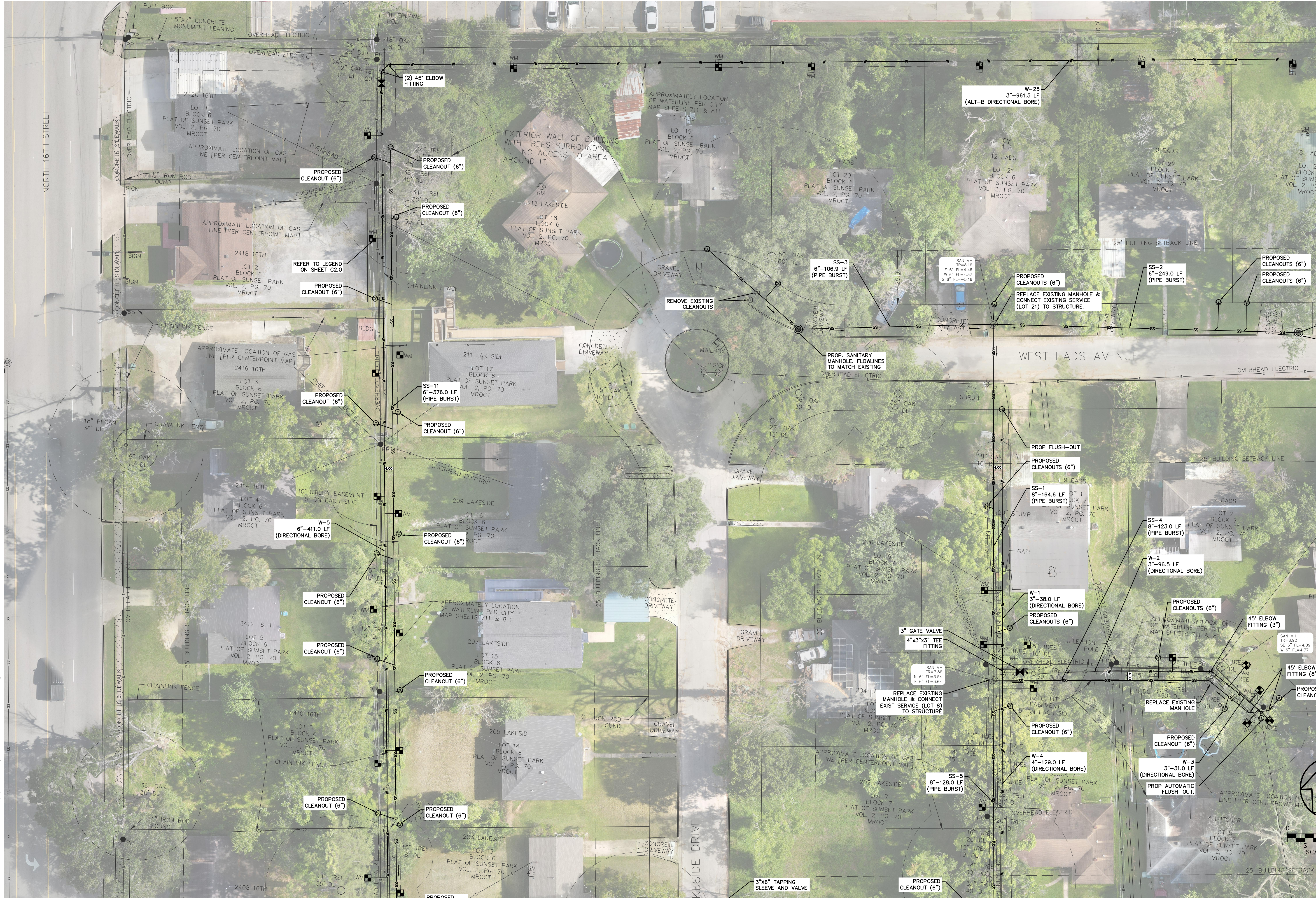
1405 Cornerstone Court
Beaumont, TX 77706
Ph. (409) 832-7238
Fax. (409) 832-7303
T.B.P.E. Firm #160 TX.L.S. Firm #100186

DANIEL A. DOTSON
109833
REGISTERED PROFESSIONAL ENGINEER
Feb 07, 2025

ORANGE
TEXAS

SUNSET ADDITION
WATER & SEWER IMPROVEMENTS
ORANGE COUNTY
ORANGE, TEXAS

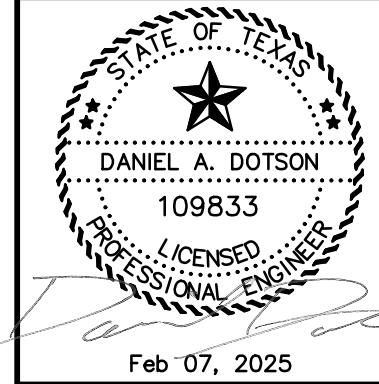
Q:\PROJECTS\22108 - Or CDBG 4466 Imelda Grant App\Civil\Drawings_Current\22108_CE_SITE.dwg Feb 07, 2025 11:06am



CALL BEFORE
YOU DIG!
TEXAS ONE
CALL SYSTEM
1-800-344-8377

OWNERSHIP OF DOCUMENTS
THIS DOCUMENT, AND THE IDEAS AND DESIGNS INCORPORATED HEREIN, AS AN INSTRUMENT OF PROFESSIONAL SERVICE, IS THE PROPERTY OF FITTZ & SHIPMAN, INC., AND IS NOT TO BE USED, IN WHOLE OR IN PART, FOR ANY OTHER PROJECT WITHOUT THE WRITTEN AUTHORIZATION OF FITTZ & SHIPMAN, INC.
COPYRIGHT 2025 FITTZ & SHIPMAN, INC.

Fittz & Shipman
INC.
Consulting Engineers and Land Surveyors
1405 Cornerstone Court
Beaumont, TX 77706
Ph. (409) 632-7238
Fax. (409) 632-7303
TXLS Firm #160 TXLS Firm #100186



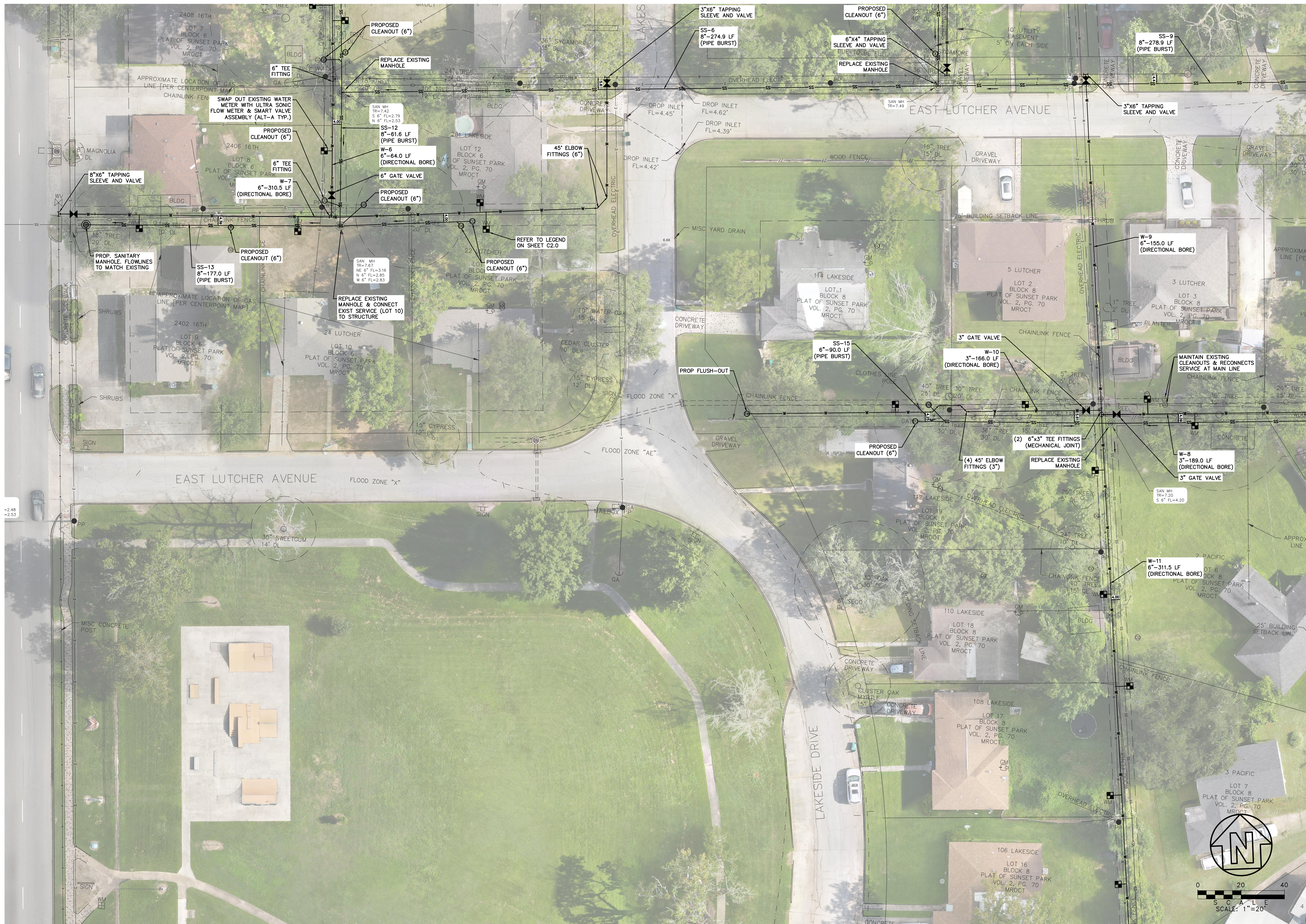
ORANGE
TEXAS
SUNSET ADDITION
WATER & SEWER IMPROVEMENTS
ORANGE COUNTY
ORANGE, TEXAS

FS PROJECT #
22108.0000
DATE: Feb 07, 2025
SCALE: 1" = 20'
DRAWN BY: TCL
CHECK BY: DAD
FS DRAWING NAME:
22108_CE_SITE
PLAN
SECTION
SHEETS

C2.01

© COPYRIGHT 2025 FITTZ & SHIPMAN, INC.

Q:\PROJECTS\22108 - Or CDBG 4466 Imelda Grant App\Civil\Drawings_Current\22108_CE_SITE.dwg Feb 07, 2025 11:07am



CALL BEFORE
YOU DIG!
TEXAS ONE
CALL SYSTEM
1-800-344-8377

OWNERSHIP OF DOCUMENTS

THIS DOCUMENT, AND THE IDEAS AND DESIGNS INCORPORATED HEREIN, AS AN INSTRUMENT OF PROFESSIONAL SERVICE, IS THE PROPERTY OF FITZ & SHIPMAN, INC., AND IS NOT TO BE USED, IN WHOLE OR IN PART, FOR ANY OTHER PROJECT WITHOUT THE WRITTEN AUTHORIZATION OF FITZ & SHIPMAN, INC.
COPYRIGHT 2025 FITZ & SHIPMAN, INC.

DATE	ISSUED FOR	NO.

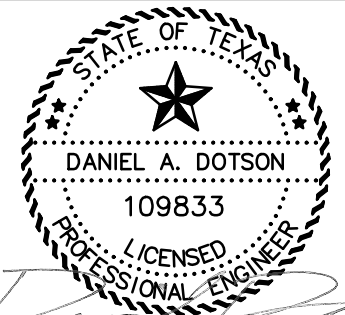
Fittz & Shipman
INC.

Consulting Engineers and Land Surveyors

1405 Cornerstone Court
Beaumont, TX 77706

Ph. (409) 832-7238
Fax. (409) 832-7303

T.B.P.E. Firm #1160 TX.L.S. Firm #100186



Feb 07, 2025

ORANGE
TEXAS
**SUNSET ADDITION
WATER & SEWER IMPROVEMENTS**
ORANGE, TEXAS
ORANGE COUNTY

FS PROJECT #

22108.0000

DATE: Feb 07, 2025

SCALE: 1" = 20'

DRAWN BY: TCL

CHECK BY: DAD

FS DRAWING NAME:

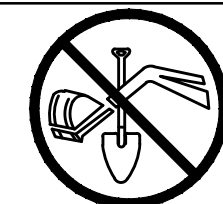
22108_CE_SITE

PLAN
SECTION
SHEETS

C2.02

© COPYRIGHT 2025 FITZ & SHIPMAN, INC.

Q:\PROJECTS\22108 - Or CD86 4466 Imelda Grant App\Civil\Drawings_Current\22108_CE_SITE.dwg Feb 07, 2025 11:07am

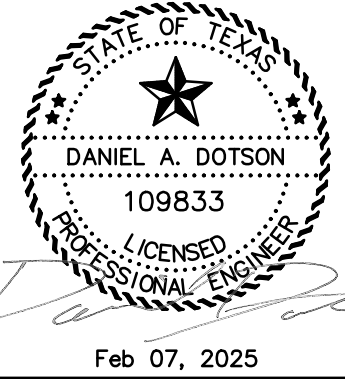


CALL BEFORE
YOU DIG!!
TEXAS ONE
CALL SYSTEM
1-800-344-8377

OWNERSHIP OF DOCUMENTS
THIS DOCUMENT, AND THE IDEAS AND DESIGNS INCORPORATED HEREIN,
AS AN INSTRUMENT OF PROFESSIONAL SERVICE, IS THE PROPERTY OF
FITZ & SHIPMAN, INC., AND IS NOT TO BE USED, IN WHOLE OR IN
PART, FOR ANY OTHER PROJECT WITHOUT THE WRITTEN AUTHORIZATION
OF FITZ & SHIPMAN, INC.
COPYRIGHT 2025 FITZ & SHIPMAN, INC.

Fittz & Shipman
INC.

Consulting Engineers and Land Surveyors
1405 Cornerstone Court
Beaumont, TX 77706
Ph. (409) 632-7238
Fax. (409) 632-1305
T.B.P.E. Firm #1160 T.X.L.S. Firm #100186



ORANGE
TEXAS
SUNSET ADDITION
WATER & SEWER IMPROVEMENTS
ORANGE COUNTY
ORANGE, TEXAS

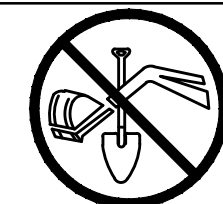
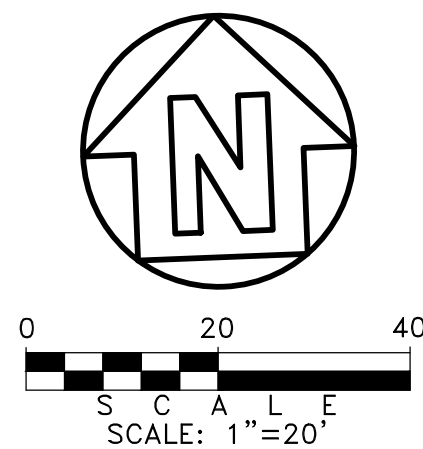
FS PROJECT #
22108.0000
DATE: Feb 07, 2025
SCALE: 1" = 20'
DRAWN BY: TCL
CHECK BY: DAD
FS DRAWING NAME:
22108_CE_SITE

PLAN
SECTION
SHEETS

C2.03

© COPYRIGHT 2025 FITZ & SHIPMAN, INC.

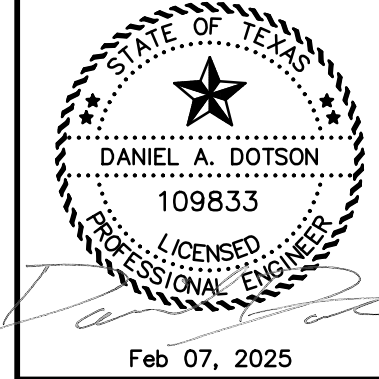
Q:\PROJECTS\22108 - Or CDBG 4466 Imelda Grant App\Civil\Drawings_Current\22108_CE_SITE.dwg Feb 07, 2025 11:08am



CALL BEFORE
YOU DIG!!
TEXAS ONE
CALL SYSTEM
1-800-344-8377

OWNERSHIP OF DOCUMENTS
THIS DOCUMENT, AND THE IDEAS AND DESIGNS INCORPORATED HEREIN, AS AN INSTRUMENT OF PROFESSIONAL SERVICE, IS THE PROPERTY OF FITTZ & SHIPMAN, INC., AND IS NOT TO BE USED, IN WHOLE OR IN PART, FOR ANY OTHER PROJECT WITHOUT THE WRITTEN AUTHORIZATION OF FITTZ & SHIPMAN, INC.
COPYRIGHT 2025 FITTZ & SHIPMAN, INC.

Fittz & Shipman
INC.
Consulting Engineers and Land Surveyors
1406 Cornerstone Court
Beaumont, TX 77706
Ph. (409) 632-7238
Fax. (409) 632-1303
T.B.P.E. Firm #1160 T.X.L.S. Firm #100186



ORANGE
TEXAS
SUNSET ADDITION
WATER & SEWER IMPROVEMENTS
ORANGE COUNTY
ORANGE, TEXAS

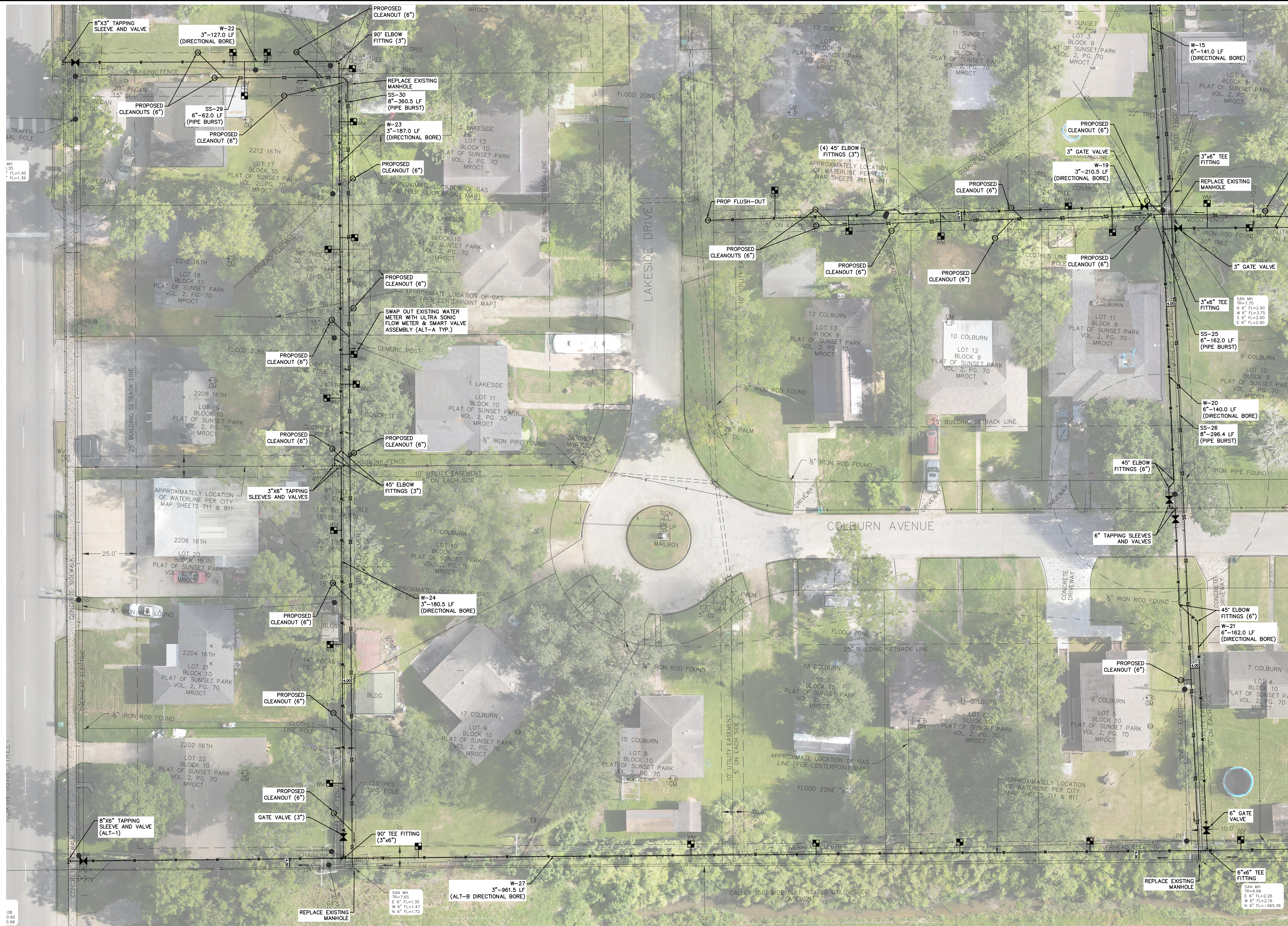
FS PROJECT #
22108.0000
DATE: Feb 07, 2025
SCALE: 1" = 20'
DRAWN BY: TCL
CHECK BY: DAD
FS DRAWING NAME:
22108_CE_SITE

PLAN
SECTION
SHEETS

C2.04

© COPYRIGHT 2025 FITTZ & SHIPMAN, INC.

Q:\PROJECTS\22108 - Or CD86 4466 Imelda Grant App\Civil\Drawings_Current\22108_CE_SITE.dwg Feb 07, 2025 11:00am



CALL BEFORE
YOU DIG!!
TEXAS ONE
CALL SYSTEM
1-800-344-8377

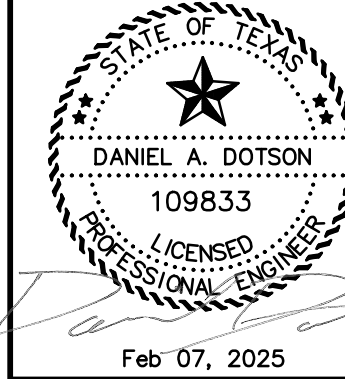
OWNERSHIP OF DOCUMENTS

THIS DOCUMENT, AND THE IDEAS AND DESIGNS INCORPORATED HEREIN, AS AN INSTRUMENT OF PROFESSIONAL SERVICE, IS THE PROPERTY OF FITTZ & SHIPMAN, INC., AND IS NOT TO BE USED, IN WHOLE OR IN PART, FOR ANY OTHER PROJECT WITHOUT THE WRITTEN AUTHORIZATION OF FITTZ & SHIPMAN, INC.

Fittz & Shipman
INC.

Consulting Engineers and Land Surveyors

1405 Cornerstone Court
Beaumont, TX 77706
Ph. (409) 832-7238
Fax. (409) 832-7303
T.B.P.E. Firm #160 TX.L.S. Firm #100186



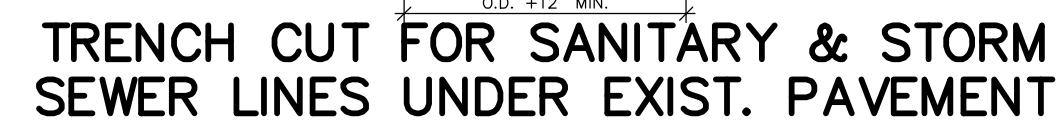
ORANGE
TEXAS
**SUNSET ADDITION
WATER & SEWER IMPROVEMENTS**
ORANGE COUNTY
ORANGE, TEXAS

FS PROJECT #
22108.0000
DATE: Feb 07, 2025
SCALE: 1" = 20'
DRAWN BY: TCL
CHECK BY: DAD
FS DRAWING NAME:
22108_CE_SITE

PLAN
SECTION
SHEETS

C2.06

© COPYRIGHT 2025 FITTZ & SHIPMAN, INC.



CLASS C BEDDING



CLASS B BEDDING



THIS DOCUMENT, AND THE IDEAS AND DESIGNS INCORPORATED HEREIN,
AS AN INSTRUMENT OF PROFESSIONAL SERVICE, IS THE PROPERTY OF
FITZ & SHIPMAN, INC., AND IS NOT TO BE USED, IN WHOLE OR IN
PART, FOR ANY OTHER PROJECT WITHOUT THE WRITTEN AUTHORIZATION
OF FITZ & SHIPMAN, INC.
COPYRIGHT 2025 FITZ & SHIPMAN, INC.

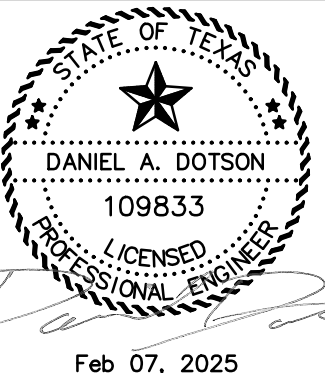
C3.10

© COPYRIGHT 2025 FITZ & SHIPMAN, INC.

FS PROJECT # 22108.0000	
DATE:	Feb 07, 2025
SCALE:	N.T.S.
DRAWN BY:	TCL
CHECK BY:	DAD
FS DRAWING NAME: 22108 CE SITE	

CONSTRUCTION
DETAILS
(SANITARY)


ORANGE
 T E X A S
SUNSET ADDITION
WATER & SEWER IMPROVEMENTS
 ORANGE, TEXAS
 ORANGE COUNTY



Fittz & Shipman INC.
Consulting Engineers and Land Surveyors

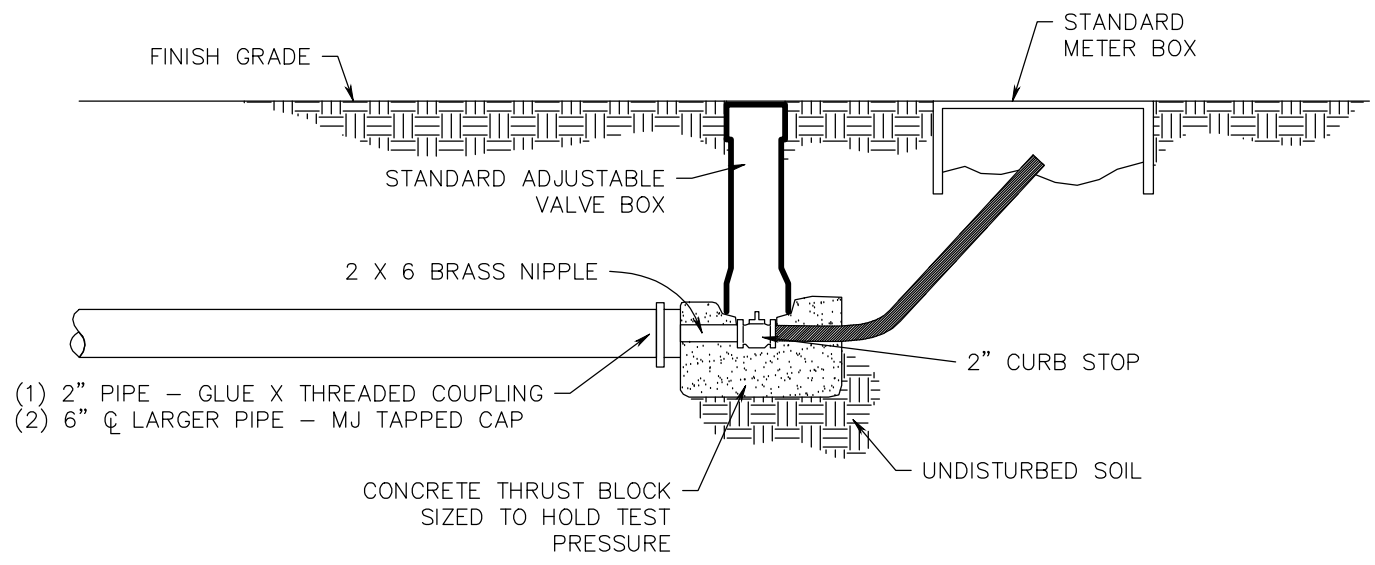
Consulting Engineers and Land Surveyors
1405 Cornerstone Court Beaumont, TX. 77706
Ph. (409) 832-7238 Fax. (409) 832-7303
www.ftitzzhipman.com
T.B.P.E. Firm #1160 T.X.L.S. Firm #100186

DATE _____

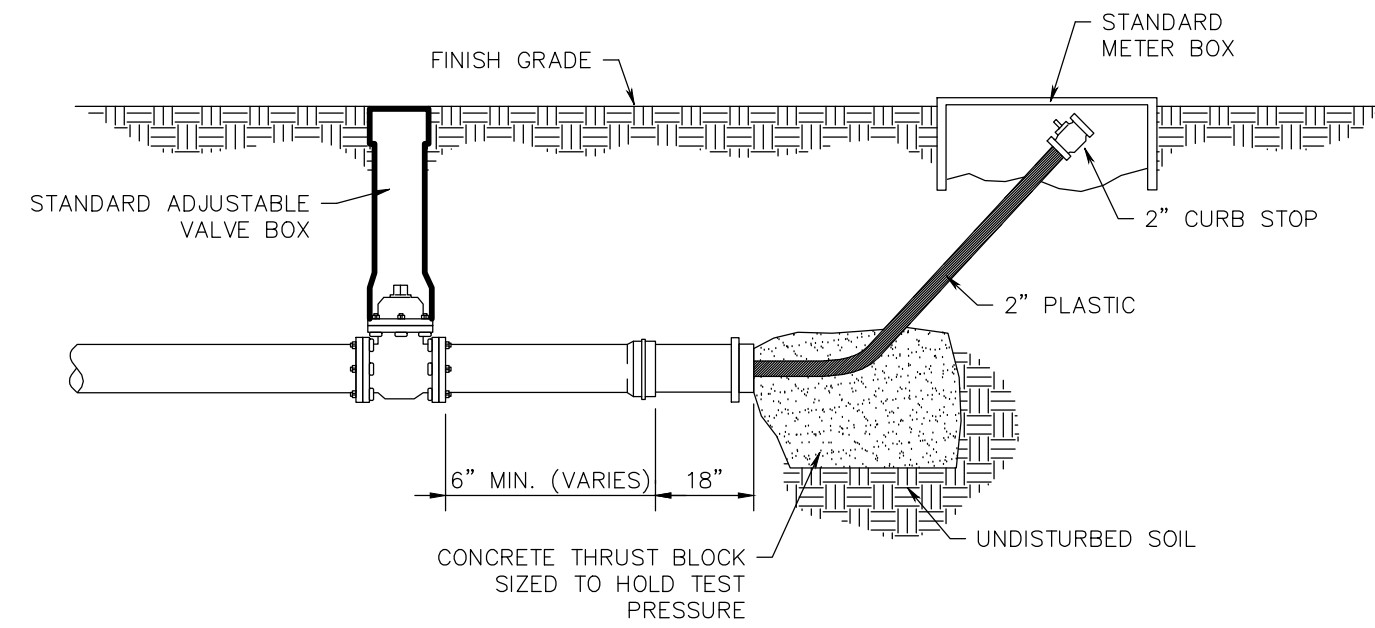
ISSUED FOR

No.

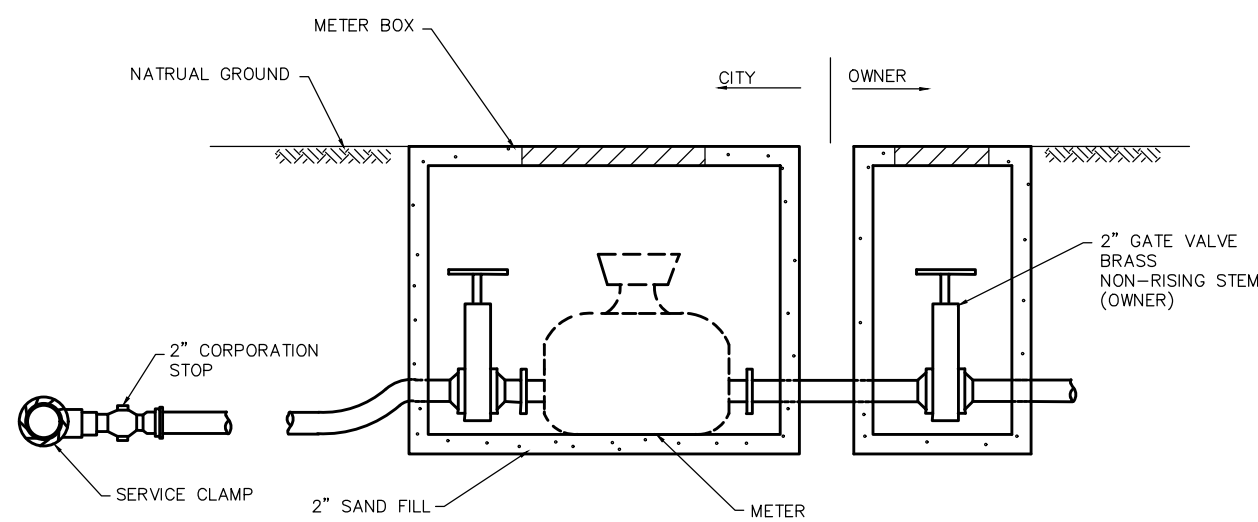
Q:\PROJECTS\22108 - Or CDBG 4466 Imelda Grant App\Civil\Drawings_Current\22108_CE_SITE.dwg Feb 07, 2025 11:41am



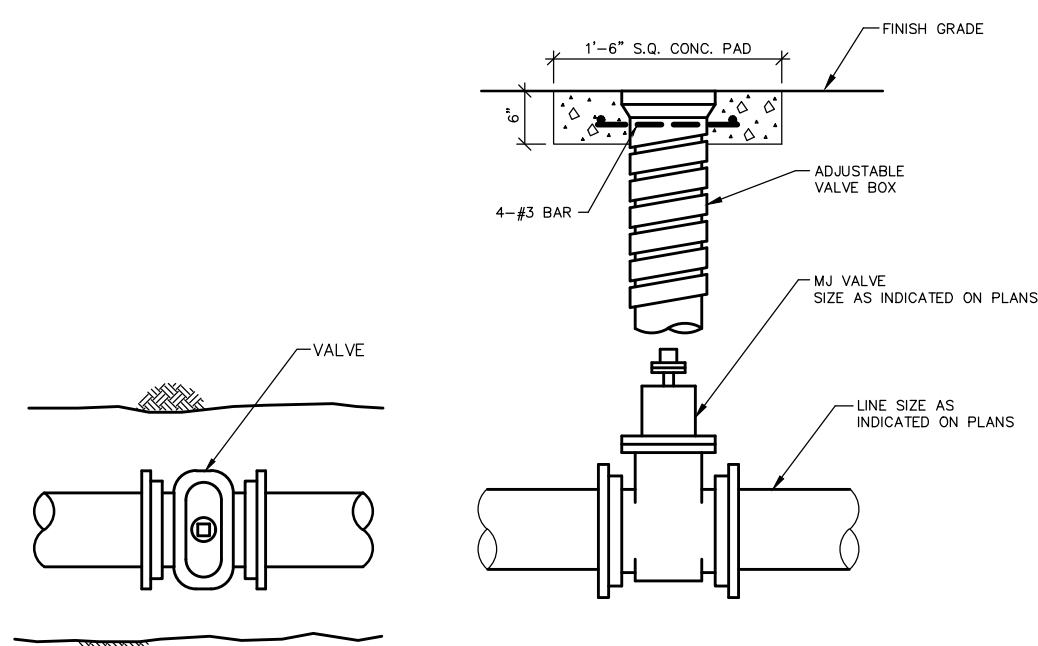
TYPICAL FLUSH-OUT DETAIL



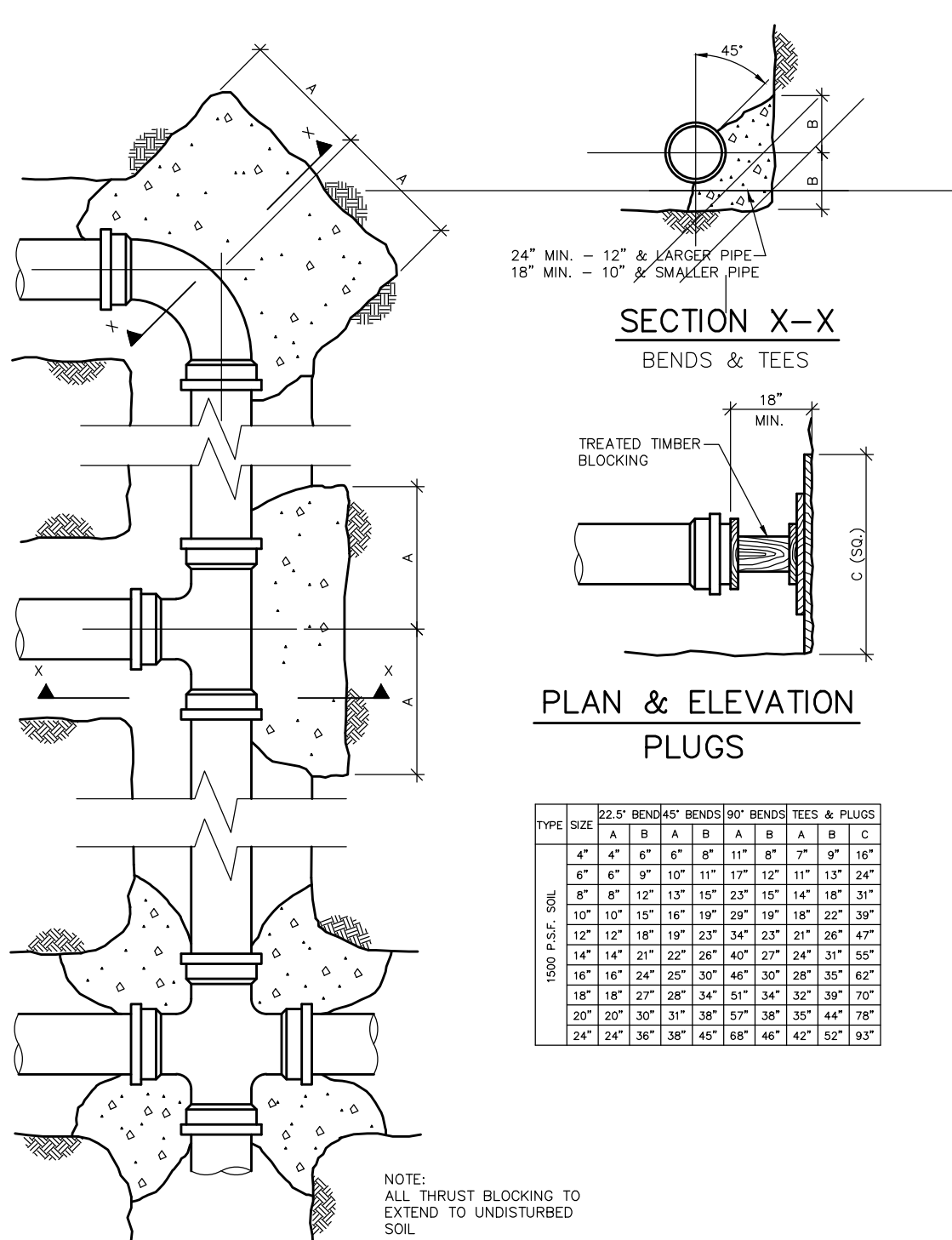
TEMPORARY FLUSH-OUT DETAIL



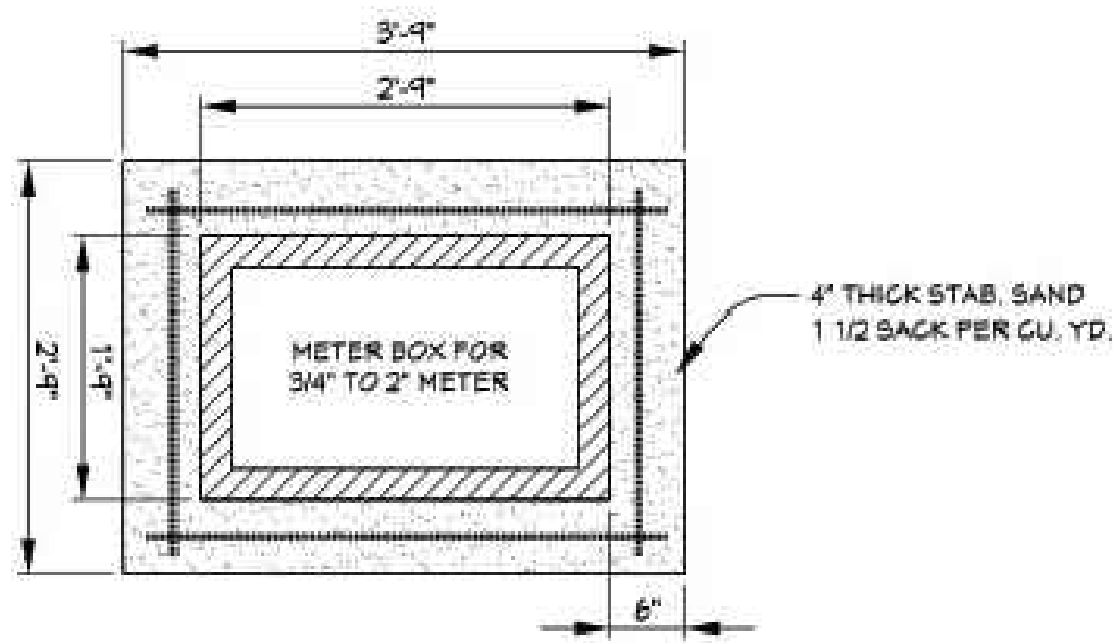
METER SERVICE CONNECTION



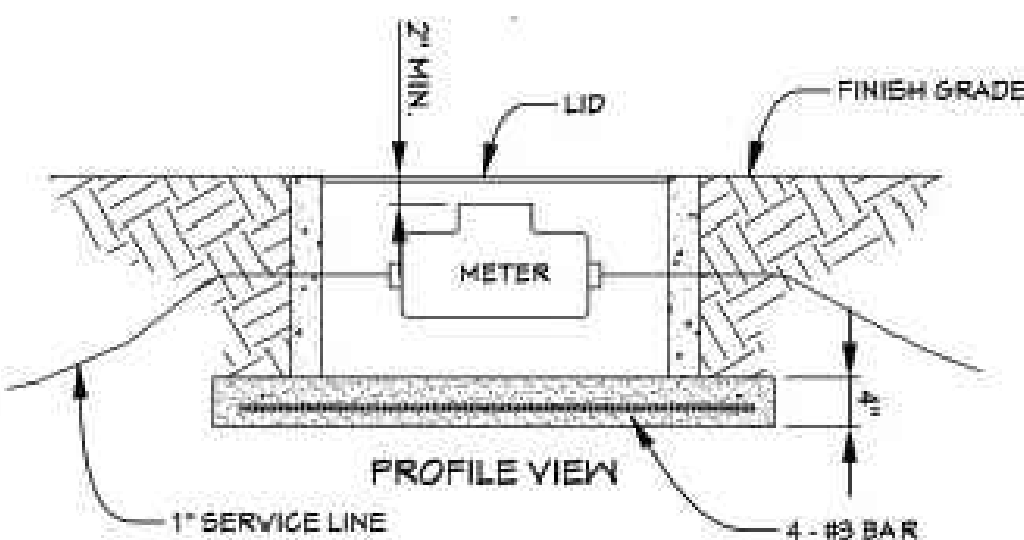
TYPICAL WATER VALVE DETAIL



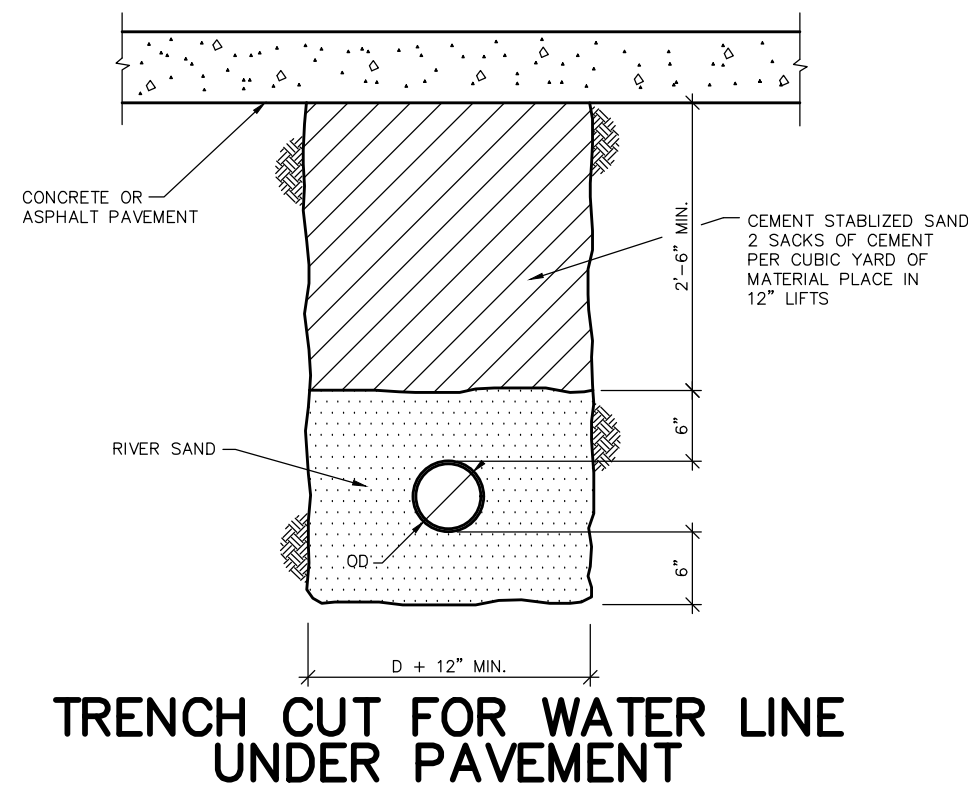
THRUST BLOCK INSTALLATION



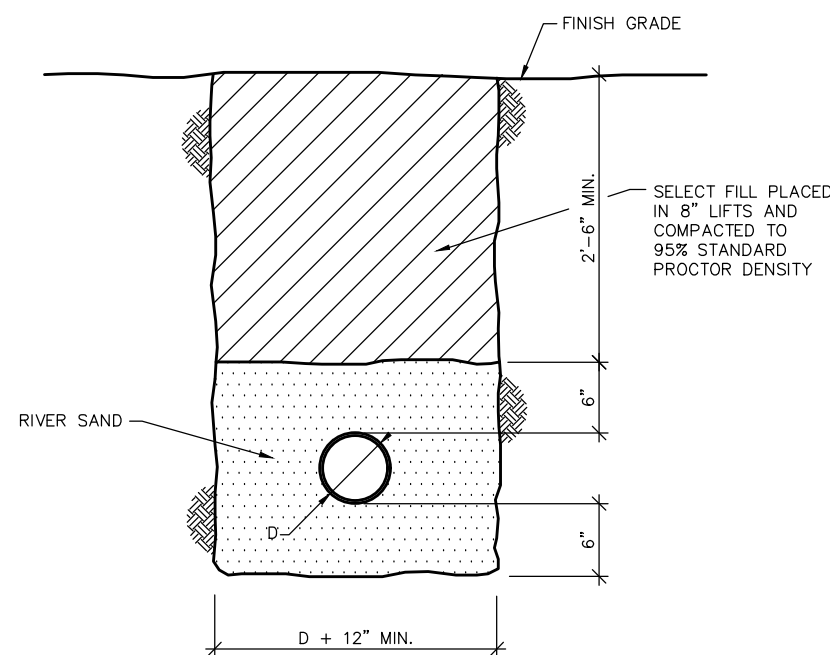
PLAN VIEW



TYPICAL METER INSTALLATION
OF 3/4" - 1" METER BOX



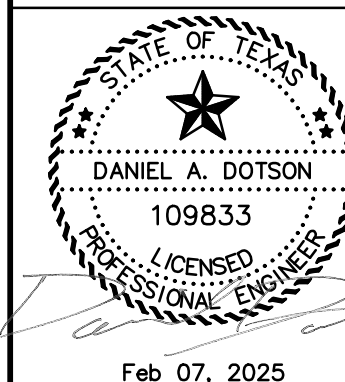
TRENCH CUT FOR WATER LINE
UNDER PAVEMENT



TRENCH CUT FOR WATER LINE

Fittz & Shipman
INC.

Consulting Engineers and Land Surveyors
1405 Cornerstone Court
Beaumont, TX 77706
Ph. (409) 832-7238 Fax. (409) 832-7303
T.B.P.E. Firm #1160 T.X.L.S. Firm #100186



Feb 07, 2025

ORANGE
T E X A S
SUNSET ADDITION
WATER & SEWER IMPROVEMENTS
ORANGE, TEXAS ORANGE COUNTY

FS PROJECT #
22108.0000

DATE: Feb 07, 2025

SCALE: N.T.S.

DRAWN BY: TCL

CHECK BY: DAD

FS DRAWING NAME:
22108_CE_SITE

CONSTRUCTION
DETAILS
(WATER)

C3.11

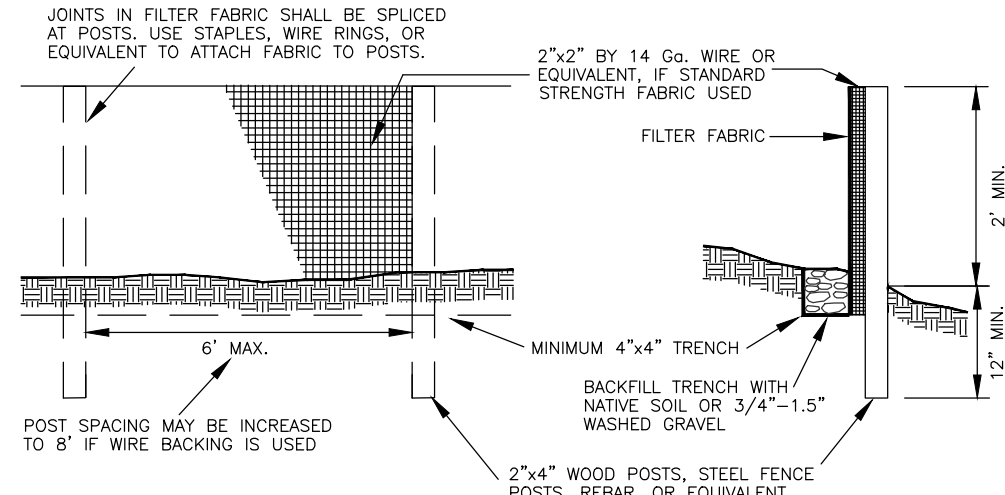
© COPYRIGHT 2025 FITTZ & SHIPMAN, INC.



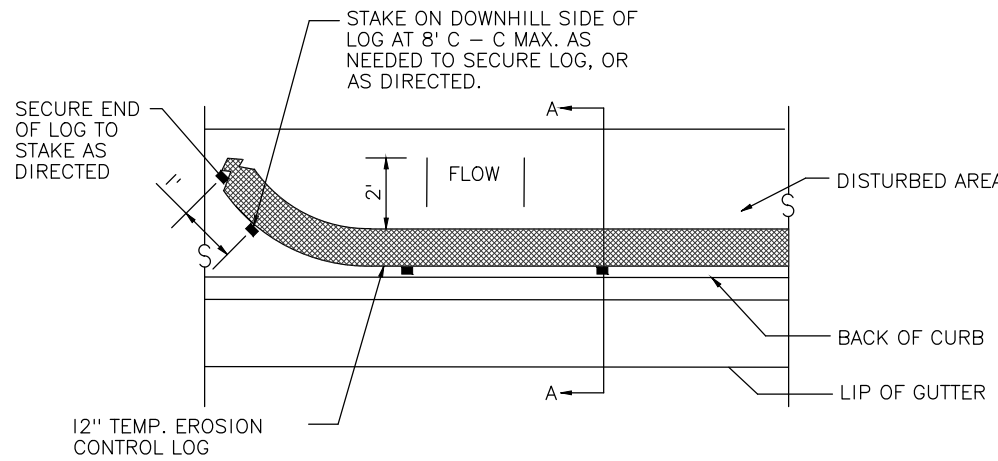
CALL BEFORE
YOU DIG!!
TEXAS ONE
CALL SYSTEM
1-800-344-8377

OWNERSHIP OF DOCUMENTS

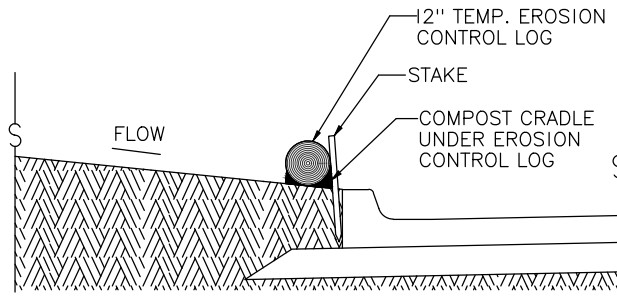
THIS DOCUMENT, AND THE IDEAS AND DESIGNS INCORPORATED HEREIN, AS AN INSTRUMENT OF PROFESSIONAL SERVICE, IS THE PROPERTY OF FITTZ & SHIPMAN, INC., AND IS NOT TO BE USED, IN WHOLE OR IN PART, FOR ANY OTHER PROJECT WITHOUT THE WRITTEN AUTHORIZATION OF FITTZ & SHIPMAN, INC.



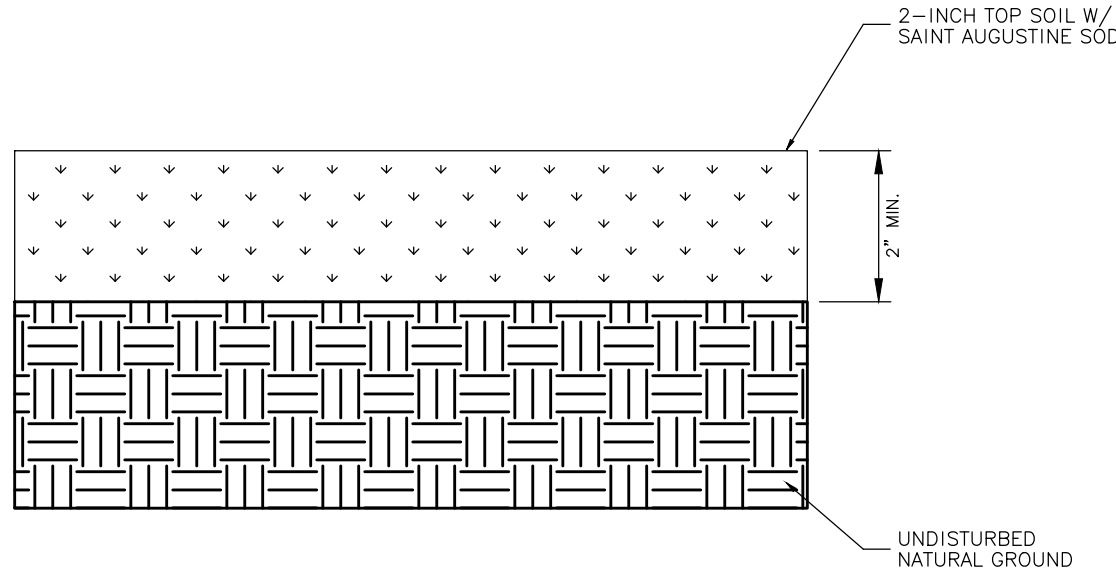
Silt Fence



1. LENGTHS OF EROSION CONTROL LOGS SHALL BE IN ACCORDANCE WITH MANUFACTURER'S RECOMMENDATIONS AND AS REQUIRED FOR THE PURPOSE INTENDED. MAXIMUM LENGTH OF LOGS SHALL BE 60' FOR 18" DIAMETER OR 30' FOR 12" DIAMETER LOGS.
2. UNLESS OTHERWISE DIRECTED, USE BIODEGRADABLE OR PHOTODEGRADABLE CONTAINMENT MESH ONLY WHERE LOG WILL REMAIN IN PLACE AS PART OF A VEGETATIVE SYSTEM. FOR TEMPORARY INSTALLATIONS, USE RECYCLABLE CONTAINMENT MESH.
3. STUFF LOGS WITH SUFFICIENT FILTER MATERIAL TO ACHIEVE DENSITY THAT WILL HOLD SHAPE WITHOUT EXCESSIVE DEFORMATION.
4. STAKES SHALL BE 2" X 2" WOOD OR #3 REBAR, 4' LONG, EMBEDDED SUCH THAT 2" PROTRUDES ABOVE LOG, OR AS DIRECTED.
5. DO NOT PLACE STAKES THROUGH CONTAINMENT MESH.



Log Placed At Edge Of Pavement



TYPICAL SECTION (LANDSCAPE)



CALL BEFORE
YOU DIG!!
TEXAS ONE
CALL SYSTEM
1-800-344-8377

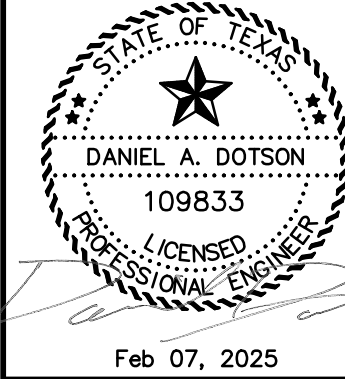
OWNERSHIP OF DOCUMENTS

THIS DOCUMENT, AND THE IDEAS AND DESIGNS INCORPORATED HEREIN, AS AN INSTRUMENT OF PROFESSIONAL SERVICE, IS THE PROPERTY OF FITTZ & SHIPMAN, INC., AND IS NOT TO BE USED, IN WHOLE OR IN PART, FOR ANY OTHER PROJECT WITHOUT THE WRITTEN AUTHORIZATION OF FITTZ & SHIPMAN, INC.

COPYRIGHT 2025 FITTZ & SHIPMAN, INC.

Fittz & Shipman
INC.

Consulting Engineers and Land Surveyors
1405 Cornerstone Court
Beaumont, TX 77706
Ph. (409) 832-7238 Fax (409) 832-7303
T.B.P.E. Firm #1160 T.X.L.S. Firm #100186



Feb 07, 2025

ORANGE
TEXAS
SUNSET ADDITION
WATER & SEWER IMPROVEMENTS
ORANGE, TEXAS
ORANGE COUNTY

FS PROJECT #
22108.0000

DATE: Feb 07, 2025

SCALE: N.T.S.

DRAWN BY: TCL

CHECK BY: DAD

FS DRAWING NAME:
22108_CE_SITE

CONSTRUCTION
DETAILS

C3.12

© COPYRIGHT 2025 FITTZ & SHIPMAN, INC.